

ID Capture v1.1 Installation Guide

ID CAPTURE V1.1

Installation Guide

© Monitor WA Pty Ltd
PO Box 10 WESTMINSTER WA 6021
Phone 61 8 9440 6600 • Fax 61 8 9440 6622

Table of Contents

Introduction	i
CHAPTER 1	
Installing IDCapture	1
Installation Requirements	1
Installing from CD	2
Installing from the Internet	3
Installing your Logitech™ Digital Camera	4
CHAPTER 2	
Support	5

Installing IDCapture

The IDCapture Installation Wizard works with the Microsoft Windows Installer to guide you through the installation process.

This chapter provides you with a step-by-step guide to installing this software onto your computer. The main topics are:

- Installation requirements
- Installing from a CD
- Installing from the Internet
- Installing your Logitech™ Digital Camera

Installation Requirements

- Microsoft Windows 2000/XP, or higher
- Minimum RAM: 128 MB
- Recommended RAM: 256 MB
- Minimum Hard Drive Space required: 60 MB
- If you are installing a Logitech Digital Camera, the following will also be required
 - USB port for Web Cam where photos are required
 - DirectX v8.0 or higher
 - Service Pack 1 for Microsoft Windows XP systems

(**N.B.** we have placed the Microsoft Windows XP Service Pack 1 and DirectX v9b, on the install CD for your convenience)

We also recommend having available space either on your local hard drive or where you will be storing the card database. The size will vary depending on how many card records your site will require.

If your system does not meet the above requirements, the software may not run correctly.

Installing from CD

To install IDCapture onto your computer, you must have Administrator privileges. The installation process requires writing registry entries and may update some system files that require Administrator rights.

Close all currently running programs when installing IDCapture.

1. Insert the IDCapture CD and, if the CD does not start automatically, browse to your CD-ROM drive and double-click on **Setup.exe**.
2. The opening window reminds you to close all other windows programs. Click **NEXT** to continue
3. Click browse if you want to install IDCapture to a directory different from the default location. The default location is: c:\program files\monitor business machines\idcapture\. Click **NEXT** to continue.
4. IDCapture installs icons into your computer's start menu, normally under a program group named idcapture. You can rename this, or change the folder location of your shortcuts. Click **NEXT** to continue.
5. Check the box to add a shortcut onto your computer's desktop. Then click **NEXT**.
6. The IDCapture installer is now ready to install. Click **INSTALL** to continue.
7. Once all files have been installed, you have the option of installing the Logitech camera drivers. If you do not need install this component, uncheck this option and check the "Launch ID Capture" option.

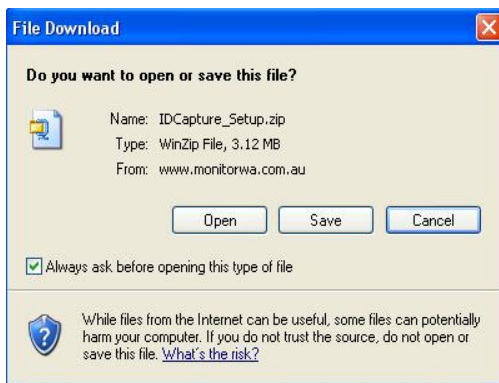
Installing from the Internet

To install IDCapture onto your computer, you must have Administrator privileges. The installation process requires writing registry entries and may update some system files that require Administrator rights.

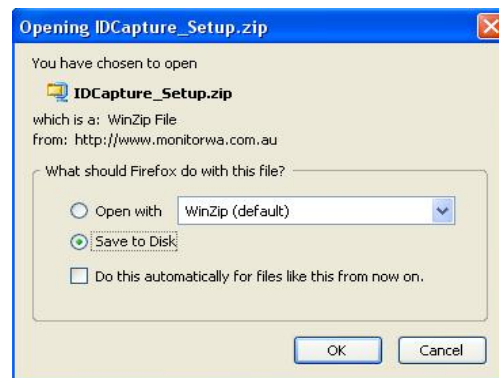
Close all currently running programs when installing IDCapture.

1. Open your internet browser of choice. I.e. Microsoft Internet Explorer, Mozilla Firefox.
2. In you browsers address bar, Input the following URL:<http://www.monitorwa.com.au/smartrider/idcapture.html>
This will take you to the Monitor WA Smart Rider Section where the program is located.
3. To Download IDCapture you will need to click on [IDCapture Executable VX.XX Compressed \(X.X Mb\)](#) link.
This will prompt a dialog box asking you to open or save a file.

For Internet Explorer Users



For Mozilla Firefox Users



- A. If you use Internet Explorer: Choose the **SAVE** Button. By default Internet Explorer will open a dialog box asking for a save location. Save the file to a location you can access. I.e. Desktop.
 - B. If you use Mozilla Firefox: Choose the “Save to Disk” Check Box then press the **OK** button. By default Firefox will save the file to the Desktop.
4. Navigate to the [IDCapture_Setup.ZIP](#) file that you just downloaded and extract the files to a folder you can access. NOTE: Windows XP has a built in Zip program that can uncompress the file. Windows 2000 does not come standard with a Zip utility. You will need to download an Unzip program such as [Winzip](http://www.winzip.com/) from <http://www.winzip.com/> or alternately [WinRaR](http://www.win-rar.com/) from <http://www.win-rar.com/>. (Both of these programs have a trial period. It is recommended that you purchase the program when the trail period is over or uninstall the program.)
 5. At the location where you extracted the files. Run the file [IDCapture_Setup.EXE](#).
 6. The opening window is a welcome window. Click **NEXT** to continue
 7. Click browse if you want to install IDCapture to a directory different from the default location. The default location is: `c:\program files\monitor WA\idcapture\`. Click **NEXT** to continue.
 8. IDCapture installs icons into your computer’s start menu, normally under a program group named Monitor WA\IDCapture. You can rename this, or change the folder location of your shortcuts. Click **NEXT** to continue.
 9. Check the box to add a shortcut onto your computer’s desktop. Then click **NEXT**.

The IDCapture installer is now ready to install. Click **INSTALL** to continue.

Installing a Logitech Camera

PLEASE NOTE: The Logitech camera should not be plugged in prior to installing the Logitech drivers.

Close all currently running programs when installing the Logitech™ drivers.

1. If you selected to install your camera from the option in the ID Capture install program, the Logitech install software should now start. If you didn't, you can manually start the Logitech install by browsing to the CD on your computer and starting the "IS730ENU.EXE" program.
2. The opening window is a welcome window. Click **NEXT** to continue
3. The installer will then extract all files required for the installation.
4. Once completed, you will need to re-start your computer. Click **NEXT** to continue.
5. Once your computer has completed starting up, the Logitech installer will prompt you to plug in your Logitech™ Digital Camera.
6. Your computer should then detect the camera and install the required drivers.
7. You are now ready to start ID Capture.

Support

Monitor WA offers phone support on the IDCapture software. If you require a Monitor Technician to assist you on-site, a fee will be incurred.

Please feel free to contact us with any suggestions or feed-back via the following channels.

internet <http://www.monitorwa.com.au>

e-mail support@monitorwa.com.au

Phone (08) 9440 6600

Fax (08) 9440 6622